

STRATEGY FOR FOR INTERNAL EVALUATION OF THE RESEARCH ORGANISATION

Tomas Bata University in Zlín
Centre of Polymer Systems



HR EXCELLENCE IN RESEARCH

EUROPEAN UNION
European Structural and Investing Funds
Operational Programme Research,
Development and Education



MINISTRY OF EDUCATION,
YOUTH AND SPORTS



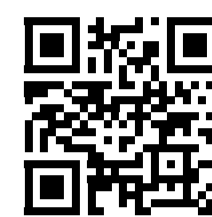
MISSION (WHY?)

The evaluation of the research organization is a key quality indicator that affects the financing of UNI/CPS and strengthens its international image.



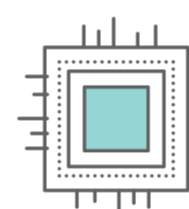
VISION (WHICH WAY?)

UNI/CPS implements an effective method of internal evaluation ensuring continuous growth of quality as well as competitiveness, at both national and international levels, seeking excellence.



VALUES (WHAT IS IMPORTANT?)

- RESPONSIBILITY
- PUBLIC COMMITMENT
- NON-DISCRIMINATION
- TRANSPARENCY
- RESEARCH ENVIRONMENT
- MONITORING/INSPECTION
- EXCELLENCE
- ORIGINALITY
- LEARNING ORGANISATION
- SOCIAL RESPONSIBILITY



STRATEGIC GOALS (WHERE?)

Strategic goals with **respect to work organization** (material and technical pre-requisites), **development of qualification** (knowledge, skills, personal abilities), and **employee motivation** (financial/non-financial incentives) are defined and continuously updated.

SEE MORE >>>>> [CPS.UTB.CZ/EN/ABOUT-US/STRATEGY](https://cps.utb.cz/en/about-us/strategy)

